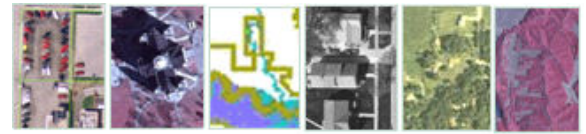


Aerial Photography In Franklin and Hardin Counties



Aerial photography provides the basis for GIS (Geographic Information Systems) in Hardin and Franklin Counties.

- Provides added information for decisions
- Makes us more efficient
- When provided with online mapping, it helps citizens know what they are looking at (more than any other layer!)
- Used for a wide variety of purposes from real estate transactions to tourism

Planning for the Future

Hardin County is in the position where they need new aerial photography. The 1998 imagery is no longer adequate to show areas of new development or change. **It will have taken us 9 years to budget the money for a new flight.**

Tremendous changes have taken place in Hardin County in the last 9 years. The largest has been the rerouting and expansion of Highway 20 through the county, which was completed in 2004.

Franklin County will be facing the issues of a new flight in the next 3 years. We continue to see huge expansion of animal confinement facilities and wind farms in the county, which will not be visible on county imagery for several years.

The Boards of Supervisors in both Franklin and Hardin Counties support a statewide acquisition of aerial photography. They want to work within a regional group to bring the cost of acquiring adequate and timely aerial imagery down.

Franklin and Hardin Co. Contact Information

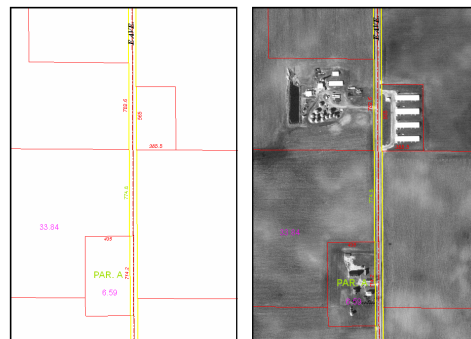
Micah Cutler
GIS Coordinator
mcutler@co.hardin.ia.us
641-939-8160

COUNTY GOVERNMENTS NEED AERIAL PHOTOGRAPHY

- Visual base to all layers
- To measure distances
- To calculate areas
- To determine shapes of features, such as ponds, structures, or wooded areas
- To determine accurate locations (using coordinates)

BUILDING ON AERIAL PHOTOGRAPHY

Aerial photography serves as the base layer for all other layers. The photograph under the "lines" make it clear to the user what he or she is looking at.



Other layers added on can include:

- School districts
- Drainage districts and drainage tiles
- Fire and other emergency districts
- TIFF districts
- Enterprise zones
- Road signs
- Facility locations
- Recreational areas and trails
- Zoning and land use boundaries

COST OF AERIAL PHOTOGRAPHY

Current imagery in Hardin County is from 1998. At that time, Hardin County paid approximately **\$98,000, or \$172 per sq. mi.**, for it. Estimates for a new flight would be \$50,000.

Franklin County purchased aerial photography in 2004 at the cost of **\$50,000, or \$86 per sq. mi.**

Although aerial imagery is currently available for free from a variety of sources, this imagery is not of sufficient resolution to be used for most county purposes. When working with land ownership issues, the ground looks "blurry" and features, such as fence lines and outbuildings are difficult to distinguish on the freely available imagery. When examining an area the size of a subdivision or city block, it is completely unusable.

COST TO PURCHASE

Aerials for Franklin and Hardin County are for sale and cost about **\$15 per 4 sq. miles.**

Total cost for entire county **\$1,200**
(with discount)

Taxpayers in essence pay twice because their tax dollars go to pay the original amount, then cities or other government agencies have to pay to purchase it.

EACH COUNTY IS SEPARATE

Information here is only for Franklin and Hardin Counties. Each and every county is working independently and some have been successful at collaboration in the past. Different counties offer different aerial photography products taken in different years with different levels of accuracy. This makes it very challenging for regional planning or to attract businesses that cross county boundaries.