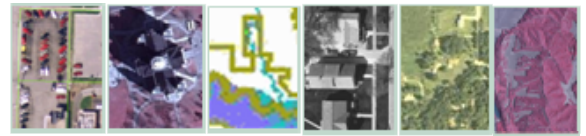


Imagery for Iowa

Iowa Geographic Information Council



Project Information

The vision of the Iowa Geographic Information Council is that Iowa will have a sustainable and flexible digital aerial imagery program that meets the needs of local, state, regional, tribal, federal and private partners. State funding should support statewide production of standardized multi-resolution products on a consistent cycle. Local, regional, private, and federal partners could pay to enhance those products in specific areas based on their needs. The imagery should remain in the public domain and be archived to secure its availability for future scientific, legal, and historical purposes.

About the Iowa Geographic Information Council:

Formally established in 1998 by Executive Order, the Iowa Geographic Information Council (IGIC) was established to coordinate spatial technologies and information within the State of Iowa.

The mission of the IGIC is to foster an efficient Geographic Information Systems (GIS) environment through cooperation and coordination with public and private entities that access, collect, provide, and share data, metadata, applications and educational opportunities.

Successful past projects by IGIC and its partners have brought to Iowa a number of different endeavors that have made imagery available to Iowans

IGIC Contact Information:

Anne Packard
GIS Coordinator & IGIC Chair
Fox Engineering
amp@foxeng.com
515.233.0000

IGIC's Remote Sensing Committee Mission:

Work to promote the timely and effective collection and dissemination of information of importance to the IGIC membership, Board, and partners, support of the IGIC organizational goals via the conduction of advocacy, outreach and liaison activities, and coordinating with partners and other stakeholder organizations to promote and achieve greater utilization of remote sensing technologies across the state.

Imagery for Iowa Questions:

Brad Cutler
GIS Planner
MIDAS Council of Governments
bacutler@gmail.com
515.576.7183 x214

Partners:

State government
Local units of government
Federal government
Regional organizations
Academic institutions
Private business and industry

The Value of Imagery

Aerial imagery provides the visual content of a photograph while being as accurate as a map for measurements. These qualities allow users to easily:

- Measure distance
- Calculate areas
- Determine shapes of features
- Calculate direction
- Determine accurate coordinates (locations)

Digital images are used to collect a wide variety of information, including transportation routes, streams, building outlines, timber stands, land use patterns, and farm fields.

Local governments rely upon digital aerial imagery to map property boundaries and manage their infrastructure assets.

Digital imagery serves as a seamless base map layer to which many other layers are registered. It also provides visual information that is useful for the following partial list of activities.

- Homeland Security and Emergency Management
- Public Safety Planning, Response, & Mitigation
- Tax Parcel Mapping
- Transportation Management
- Economic Development
- Utilities Management, Operations & Planning
- Land Planning and Zoning
- Code & Permit Enforcement
- Agriculture – Animal Feeding Operations & Manure Management Plans
- Insurance
- Surveying & Mapping
- Environmental Management, Planning & Regulation
- Public Health Services
- Education

Proposal Details

- Each partner will specify its imagery requirements in its business plan (resolution, frequency, and image type)
- Base resolution for statewide imagery will be 2-foot.
- Participants can “buy-up” to acquire imagery at higher resolutions or faster intervals. Buy-up resolutions will include 1-foot, 6-inch, and 3-inch.
- Image acquisition will be accomplished during “leaf-off” conditions unless otherwise agreed to.
- All imagery will remain freely available on the Internet for access and usage.

Cost of the Proposal

IGIC estimates that a statewide program will cost approximately \$1.5 million dollars per cycle based on industry pricing. It is anticipated that the cycle will be setup on either a 3 or 4 year rotation.

Economies of Scale & Coordination

A single statewide program can be managed and implemented for far less money than state and local governments spend when they issue independent contracts. This program will offer outstanding value to local governments due to price breaks achieved by contracting for increasingly large areas.

This program will also work towards the creation and establishment of a consistent, accurate, foundational base map upon which local government and many regional, state and federal geospatial data applications could be built, working towards producing an efficient statewide spatial data infrastructure.

Aerial imagery is the foundation for most public and private GIS (Geographic Information Systems) operations, yet it is being developed by many different entities across Iowa in an uncoordinated fashion. Some areas are essentially “left behind” due to lack of coordination or funding. There are holes in the coverage, varying qualities of product and the duplication of effort leads to higher costs; varying quality, accuracy and currency; and restrictions on its access and use.

